

VOLUME 41
NUMBER 2
SPRING 2004

THE M.C.GILL DOORWAY™

HIGH-PERFORMANCE COMPOSITE PRODUCTS SINCE 1945



Working Together



M.C. GILL CORPORATION



**Triumph Composite
Systems, Inc.**
A Triumph Group Company

M.C. Gill Corporation and Triumph Composite Systems

Team to Provide
Finished
Aircraft
Floor Panels



M.C. Gill Corporation and Triumph Composite Systems, Inc. have joined together in an exclusive multiyear contract. Under this contract, M.C. Gill will manufacture raw stock panels for Triumph Composite Systems to fabricate into finished products.

In addition to the supply agreement, a Memorandum of Understanding (MOU) was agreed to by the companies. This MOU sets parameters for Triumph Composite Systems to fabricate ready-to-install aircraft floor panel products to both OEM and aftermarket customers, using raw stock panels manufactured by M.C. Gill.

“Triumph Composite Systems is proud to join in these agreements, as they allow for a synergy to develop that highlights the strengths of both companies in promoting technical breakthroughs, high quality and excellent customer service. Drop-in finished floor panels provide OEM and aftermarket customers greater flexibility and value. Our supply agreement and joint marketing efforts increase our ability to offer customers a lower cost, high quality product,” announced Bill Boyd, TCS Director of Operations – Floor Panels and Plastic Products.

“M.C. Gill and Triumph products are well-known for their high performance and quality.” Irv Freund, M. C. Gill VP Sales and Marketing, agreed: “This MOU complements the agreement in place between our companies for supplying Boeing’s newly manufactured commercial aircraft with floor panels within the Triumph-Boeing agreement. It also expands our ability to jointly offer detailed finished aircraft floor panels to both the OEM and aftermarket. Current and future customers will certainly benefit from this alliance.”

M.C. Gill Corporation is one of the world’s largest manufacturers of baggage compartment liners and composite sandwich panels used in aircraft flooring for commercial aircraft. The M.C. Gill Group of Companies is headquartered in El Monte, California.

Triumph Composite Systems, Inc., located in Spokane, Washington, is a Triumph Group Company. The company is an aerospace industry leader in the manufacture of high-quality composite interior components. These products range from air control system ducting to aerospace composite assemblies including glare-shields, drip-shields, side-wall risers, aisle stands and mix bay manifolds.



Additional Information

M.C. Gill Corporation
info@mcgillcorp.com
626 443-4022
www.mcgillcorp.com



Alcore Brigantine Products Aboard Queen Mary 2 Luxury Liner

Queen Elizabeth II has officially christened the state-of-the-art Cunard Line's Queen Mary 2. The new QM2 is 342 meters (1,138 feet) long and 71 meters (238 feet) high – as tall as a 21-story building. QM2 was built at the Chantiers de l'Atlantique shipyard in Saint-Nazaire, France, the birthplace of such famous liners as Normandie, France and Ile de France.

At 150,000 tons, QM2 is the biggest passenger vessel the world has ever seen and is praised as a return to the golden age of transatlantic voyages, a bygone era. While this 2,620-passenger ocean liner evokes a feeling of grandeur, it also projects a progressive style with contemporary amenities and technological innovations. This includes aluminum honeycomb materials from Alcore Brigantine – part of the M.C. Gill Group of Companies.

Alcore Brigantine is proud to have participated in the construction of this exceptional ship by producing about 900 partition walls for deluxe cabin balconies. These are composed of a fixed wall and a door constructed of CGH-ALPHEX® Honeycomb. This commercial-grade aluminum honeycomb is ideal for a wide variety of industrial applications, as well as lightweight and energy-absorbing structures for transportation.

Alcore Brigantine conducted all design, qualification, construction and finishing work in their facility, located in Anglet, France. This included honeycomb and sandwich panels processing, and completion of edge profiles, door locks and hinges, stainless steel equipment and final painting. The M.C. Gill Group of Companies wish the QM2 a bon voyage!



Balcony units are fabricated at Alcore Brigantine's facility.



The Queen Mary 2 on its maiden voyage.



Additional Information

Alcore Brigantine

Route de l'Aviation
7, allée Etchecopar
64600 Anglet France

phone/téléphone:
+33 (0) 5 59 41 25 25
fax/télécopie:
+33 (0) 5 59 41 25 00
email: sales@alcorebrigantine.fr

M.C. Gill Corporation

Email: info@mcgillcorp.com
www.mcgillcorp.com



Les Produits ALCORE BRIGANTINE à bord du Paquebot de luxe QUEEN MARY 2.

La reine Elizabeth II a officiellement baptisé le fleuron des paquebots du Groupe Cunard, le QUEEN MARY 2, lors de la cérémonie. Le nouveau QUEEN MARY 2 atteint les dimensions de 342 mètres de long, 45 m de large et 71 m de haut, soit l'équivalent d'un immeuble de 21 étages. Il a été construit aux Chantiers de l'Atlantique à Saint-Nazaire en France, où sont nés tant de paquebots renommés comme le France, et le Normandie.

Avec 150 000 Tonnes, QM2 est le plus grand paquebot de croisière jamais construit et inaugure le retour de l'âge d'or des grandes traversées transatlantiques. En dégageant un sentiment de splendeur, il est capable de transporter 2620 passagers dans des aménagements de style contemporain et propose de nombreuses innovations technologiques. Ces innovations incluent l'utilisation de panneaux sandwich en nid d'abeille aluminium réalisés par ALCORE BRIGANTINE qui fait partie du Groupe M.C. GILL.

ALCORE BRIGANTINE est fière d'avoir participé à la réalisation de ce navire exceptionnel en fabriquant près de 900 séparations des balcons des cabines de luxe.

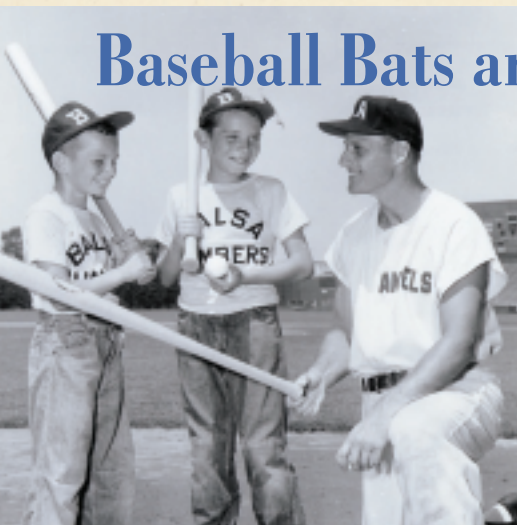
Ces séparations sont composées de cloisons fixes et de portes en panneaux sandwichs en nid d'abeille aluminium CGH-ALPHEX®. Ce nid d'abeille de qualité industrielle est le produit idéal pour une large variété de panneaux rigides et légers pour applications industrielles ainsi que pour la réalisation de structures légères d'absorption d'énergie utilisés dans les Transports Aériens et Ferroviaires.

ALCORE BRIGANTINE a développé l'ensemble des études, des qualifications, de la fabrication et de la finition de ces séparations dans son usine d'Anglet en France. Cela incluse la fabrication du nid d'abeille et des panneaux sandwichs, l'assemblage des profilés de bordure, des serrures, des charnières et de l'accastillage inox, ainsi que la peinture.

Notre Société souhaite un Bon Voyage au QUEEN MARY 2.

Alcore Honeyco Provides Hitter a

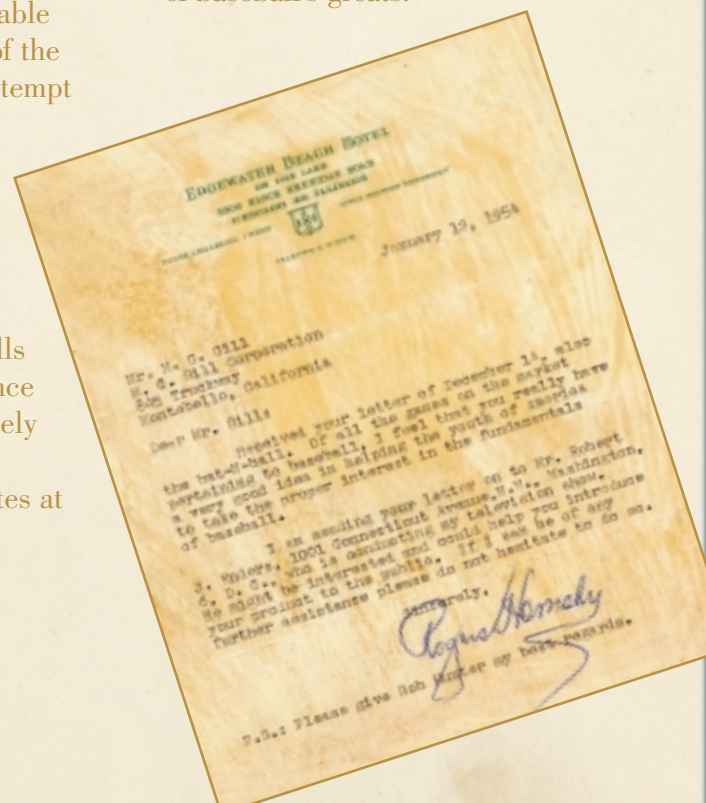
Baseball Bats and Balls Were Early M.C. Gill Products



M.C. Gill has had a long interest in baseball.

Back in the early days of the M.C. Gill Corporation, there was a lot of effort put forth to find a viable product for plastics. One of the side roads taken was an attempt to serve the kid's baseball market. The Balsa Bomber Baseball Bat, made of balsa wood with a plastic coating, was one of the minor successes. Coupled with cork baseballs that came with the assurance that they would be less likely to break windows or cause injury, they became favorites at summer camps across the country.

Major League Baseball Players endorsed the M.C. Gill Balsa Bomber products, as did the likes of Rogers Hornsby, one of baseball's greats.



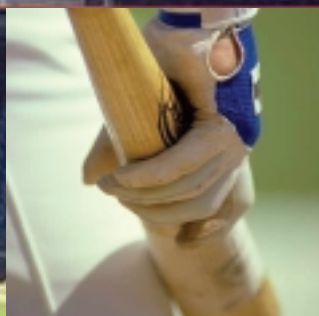


mb



Honeycomb
reduces reflection.

Better Background



It has been a struggle to find a way to help batters see pitches at Seattle's Safeco Field ballpark because of the glare off the back wall. Numerous attempts have been made to alleviate the problem, including adjusting the wall angle, moving it 20 feet to one side, painting it a variety of colors, in addition to planting and removing a grove of trees.

The Seattle Mariners have also changed game times, but even that didn't solve the problem. Now Alcore, part of the M.C. Gill Group of Companies, has provided aluminum honeycomb which is powder-coated a flat black, attached to panels and mounted on the wall. This presents

a non-reflective surface that will eliminate glare while holding up to the weather.

It is ambitious to think that aluminum honeycomb can improve a major league team's batting average; but consider that the Mariners have been hitting .259 as a team at home and .297 on the road. That is coupled with an average of 5.8 runs on the road but only 4.2 runs at home.

Alcore aluminum honeycomb is usually used for aerospace applications, though there is growing awareness of its ability to adapt to a wide range of uses, including some as unexpected as in professional baseball parks. Play ball!

Computerized Controls Reduce Variability Improve Quality

M.C. Gill Corporation has automated the curing process to make panels and laminates by computerizing the press controls. The purpose of this was to make the curing process more consistent. The advantages of the automation are increased capacity, reduced product variability (which results in improved product quality), and reduced operator

time needed to monitor the equipment. In the past, the operator had to supervise the press cycles and change control settings manually. This led to a tremendous amount of operator time necessary to supervise the process as well as lost capacity when the presses were waiting for operator action to proceed to the next step.

The new computerized controls also provide additional control capabilities that were not possible with the prior manual control. This is an important upgrade as we now have much more flexibility to make panels or laminates with complex cure profiles.



Claudia Sanchez –
Production Superintendent
and Ray Lopez – Materials
Manager, flank Paul
Draghi – Director of
Operations.



Automating presses
assures consistency.

Scott Brinker is the
Production Superintendent
for Second Shift.



Gillshots



Ryan McQuillan, Technical Manager, M.C. Gill Europe Ltd.

Senior Sales Rep Cindy Mays introduces Bolder Manufacturing President Ben Boloori and Manager of Fabrication Thang Nguyen to M.C.



Jeremy Hale missed the photo shoot but we told him we'd blend him into the picture.



Dave Cross, Dennis McGuinness, Dan Johnson, Irv Freund, Martin Canning, Eldon Swanson from the M.C. Gill Group of Companies.



Joe Valdez celebrates 50 years with M.C. Gill.

Bill Boyd, James Vallance and Richard Davison from Triumph Composite Systems say hello to M.C.



The M.C. Gill Group of Companies



M.C. GILL CORPORATION

4056 Easy Street, El Monte, California 91731
phone: 626 443-4022 fax: 626 350-5880 email: info@mcgillcorp.com



Alcore

Lakeside Business Park,
1502 Quarry Drive
Edgewood, Maryland 21040
USA
phone: 410 676-7100
fax: 410 676-7050
email: sales@alcore.com

Alcore Overnight™
Expedited Delivery
email: overnight@alcore.com

Alcore does not sell sandwich panels. Contact M.C. Gill for these products.



Castle Industries of California, Inc.

601 South Dupont Avenue
Ontario, CA 91761-1502 USA
phone: 909 390-0899
fax: 909 390-0898
email:
info@castleindustries.net



Alcore Brigantine

Route de l'Aviation
7, allée Etchecopar
64600 Anglet France
phone/téléphone:
+33 (0) 5 59 41 25 25
fax/télécopie:
+33 (0) 5 59 41 25 00
email: sales@alcorebrigantine.fr



M.C. Gill Europe Ltd.

23 Enterprise Road,
Balloo Industrial Estate South
Bangor Co-Down
BT19 7TA, N. Ireland
phone: +44 (0) 2891 470073
fax: +44 (0) 2891 478247
email: sales@insoleq.co.uk

© M.C. Gill Corporation. All Rights Reserved. M.C. Gill, the M.C. Gill logo, Insoleq, Gillfab composite, Gillcore, Gilliner, Gillite, Alcore, Alcore Overnight, Alcore Brigantine, the Alcore logo, the Alcore Brigantine logo, PAA-CORE, the Insoleq logo, the Castle logo and The Doorway are trademarks of M.C. Gill Corporation. The M.C. Gill "Honeycomb Bee" character is a trademark character of the M.C. Gill Corporation



THE DOORWAY IS PRINTED ON 10% POST-CONSUMER RECYCLED PAPER AND SHOULD BE RECYCLED

www.mcgillcorp.com

40 Years of The Doorway

This Spring 2004 issue of *The Doorway* marks 40 non-stop years of publication. Over the decades *The Doorway* has become known throughout the world, where it is anticipated for stories about interesting product applications, research advances and, of course, the Jokes and Trivia. *The Doorway's* circulation to industry professionals is greater than many trade publications.



Trivia

Orville Wright was the advisor for the Boy Scout's Aviation Merit Badge.

★ ★ ★

A hamlet is a village without a church and a town is not a city until it has a cathedral.

84% of a raw apple is water.

★ ★ ★

99% of the pumpkins sold in the U.S. end up as jack-o'-lanterns.

★ ★ ★

A cucumber is 96% water.

★ ★ ★

A notch in a tree will remain the same distance from the ground as the tree grows.

★ ★ ★

A pineapple is a berry.

In 1797, André-Jacques Garnerin made the first parachute jump. He dropped from about 6,500 ft. over Monceau Park in Paris in a 23-ft.-diameter parachute made of white canvas with a basket attached.

★ ★ ★

The great Gothic cathedral of Milan was started in 1386, and wasn't completed until 1805.

★ ★ ★

The Mona Lisa, by Leonardo daVinci, is only 2' 6" by 1' 9". X-ray technology has shown there are three different versions of the Mona Lisa under the visible one.

★ ★ ★

The largest stained-glass window in the world is at Kennedy International Airport in New York City. It can be seen on the American Airlines terminal building and measures 300' long by 23' high.

★ ★ ★

"Fortnight" is a contraction of "fourteen nights." In the U.S. "two weeks" is more commonly used.

★ ★ ★

A bathometer is an instrument for indicating the depth of the sea beneath a moving vessel.

★ ★ ★

A "jiffy" is an actual unit of time for 1/100th of a second.

THE FUNNY SIDE

Even if you're on the right track, you'll get run over if you just sit there.

Will Rogers

★ ★ ★

My mother always said that I was "determined, not stubborn or bullheaded." And understanding that distinction has been essential to my career. **M.C. Gill**

★ ★ ★

Live in such a way that you would not be ashamed to sell your parrot to the town gossip.

Will Rogers

★ ★ ★

I am a strong believer in luck and I find the harder I work the more I have of it.

Benjamin Franklin

★ ★ ★

Innovation is the most creative part of Entrepreneurship.

M.C. Gill

You know everybody is ignorant, only on different subjects.

Will Rogers

★ ★ ★

Always forgive your enemies; nothing annoys them so much.

Oscar Wilde

★ ★ ★

If you tell the truth you don't have to remember anything.

Mark Twain

★ ★ ★

Beware of the young doctor and the old barber.

Benjamin Franklin

Absurdity, *n.*: A statement or belief manifestly inconsistent with one's own opinion.

Ambrose Bierce
The Devil's Dictionary

★ ★ ★

The best way to cheer yourself is to try to cheer someone else up.

Mark Twain

